

## Fenner Grid Coupling

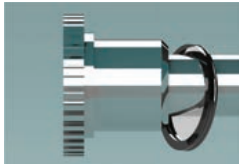
Requirements are wrenches, a straight edge and feeler gauges to install the couplings. Its size from 1020 to 1090 are furnished for a clearance fit with a setscrew over the keyway. Larger sizes (from 1100 and up) are furnished for an interference fit without a set screw.

**Clearance Fit Hubs :** Clean all parts using a non-flammable solvent. Check hubs, shafts and key ways for burrs. Install keys. Mount hubs with the flange face flush with shaft ends (or as otherwise specified). Tighten setscrews. Do not heat clearance fit hubs.

**Interference Fit Hubs :** Furnished without setscrews.



### TO INSTALL



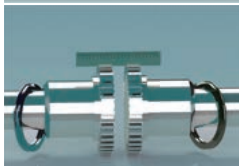
#### 1) Mount Seals and Hubs

Lock out starting switch of prime mover. Clean metal parts using a non-flammable solvent. Lightly coat seals with grease and place on shafts before mounting hubs. Heat interference fit hubs. Seal keyways to prevent leakage. Mount hubs on their corresponding shafts so that the hub face is flush with the end of the shaft (unless otherwise indicated).



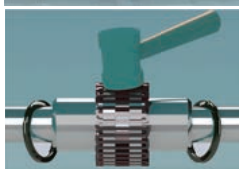
#### 2) Gap and Alignment

Use a spacer bar which is equal in thickness to the gap between shafts. Insert bar and same depth at 90° intervals and measure clearance between bar and hub face with feelers. The difference in minimum and maximum measurements must not exceed the angular installation limits.



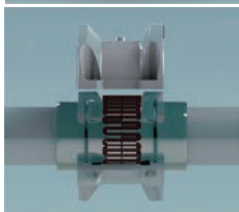
#### 3) Offset Alignment

Align a straight edge so that it rests squarely on both hubs as shown in the diagram. Check with feelers. The clearance must not exceed the parallel offset installation limits. Tighten all foundation bolts and repeat Steps 2 and 3. Realign coupling if necessary.



#### 4) Insert Grid

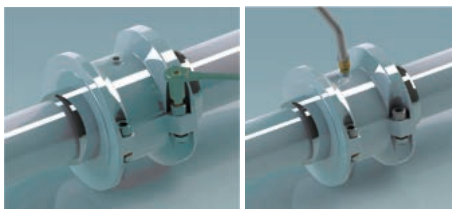
Pack the gap and grooves with specified lubricant before inserting grid. When grids are furnished in two or more segments, install them so that all cut ends extend in the same direction. This will assure correct contact between the grid and any nonrotating pins in each half of the covers. Spread the grid just enough so that it passes over the coupling teeth. Seal with a soft mallet.



#### 5) Pack

Pack any spaces between and around the grid with as much lubricant as possible. Wipe off any excess so that any remaining lubricant is flush with top of grid. Position hub seals to line up with the grooves in the cover. Position gaskets on lower cover half flange and assemble the two covers so that the match marks are on the same side. If shafts are not horizontally level, or if the coupling is to be used vertically, assemble cover halves with the lug so that the match marks are up or are on the high side. Push gaskets in against the seals as far as possible. Secure cover halves with fasteners and tighten to torque. Make sure gaskets stay in position while the fasteners are tightened.

### ANNUAL MAINTENANCE



- Check alignment. If the maximum operating misalignment limits exceeded, realign the coupling to the recommended installation limits.
- Check that all fasteners are tightened to torque.
- Inspect Oil Seal and Gasket to determine if replacement is required. Replace if the Seal and gasket are leaking grease.
- Disassemble the coupling and inspect for wear. Replace any worn parts. Clean grease from coupling and repack with new grease. Install coupling using a new gasket.